



# ADVANCED FOLDING COVER INSTALLATION INSTRUCTIONS Advanced Folding X5 Supra Cover

1997-2010 Nissan Frontier

(Part Number's 28800, 28820, 28835, & 28836)



For the video check out  
[http://www.youtube.com/  
watch?v=Hk5Q8hcaAN4](http://www.youtube.com/watch?v=Hk5Q8hcaAN4)

[www.Advancedfoldingcover.com](http://www.Advancedfoldingcover.com) E-Mail [Info@Advancedfoldingcover.com](mailto:Info@Advancedfoldingcover.com)

Phone Number 1-877-723-8262

# Prep Work And Check List



Clean the Surface of the Box sides on your truck with denatured alcohol or wax remover. It is IMPORTANT that the surface is clean so that our Box seal will adhere properly to the Truck box.

## Suggested Tools

Scissors



5/16" Socket or Wrench



3/8" Wrench



Drill



## Installation Kit

2 Rails



10 Clamps



2 Box Seals



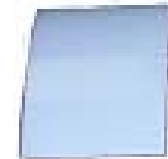
2 D-Seals



1 Guide



4 Strips of Mylar Tape



Website: [www.Advancedfoldingcover.com](http://www.Advancedfoldingcover.com)

E-Mail [Info@Advancedfoldingcover.com](mailto:Info@Advancedfoldingcover.com)

Phone Number 1-877-723-8262

# Step 1

## Install Rails And Seals

1. There are two rails. Put the rail with the 3<sup>rd</sup> leg hinge clamp, (Fig.1) with screw facing tailgate, closest to the cab on the bed rail. **Make sure the rail is as close as possible to the cab.** Remove the two-sided piece of tape and push the rail down. Then, do the same for the other side.



It is very important, to have the rail touching the front of the truck box, so the cover can line up correctly. If unable to exactly begin at the front of box, make sure each rail is equal distance away from the front of the box on each side. Check this first, if the cover does not line up correctly.

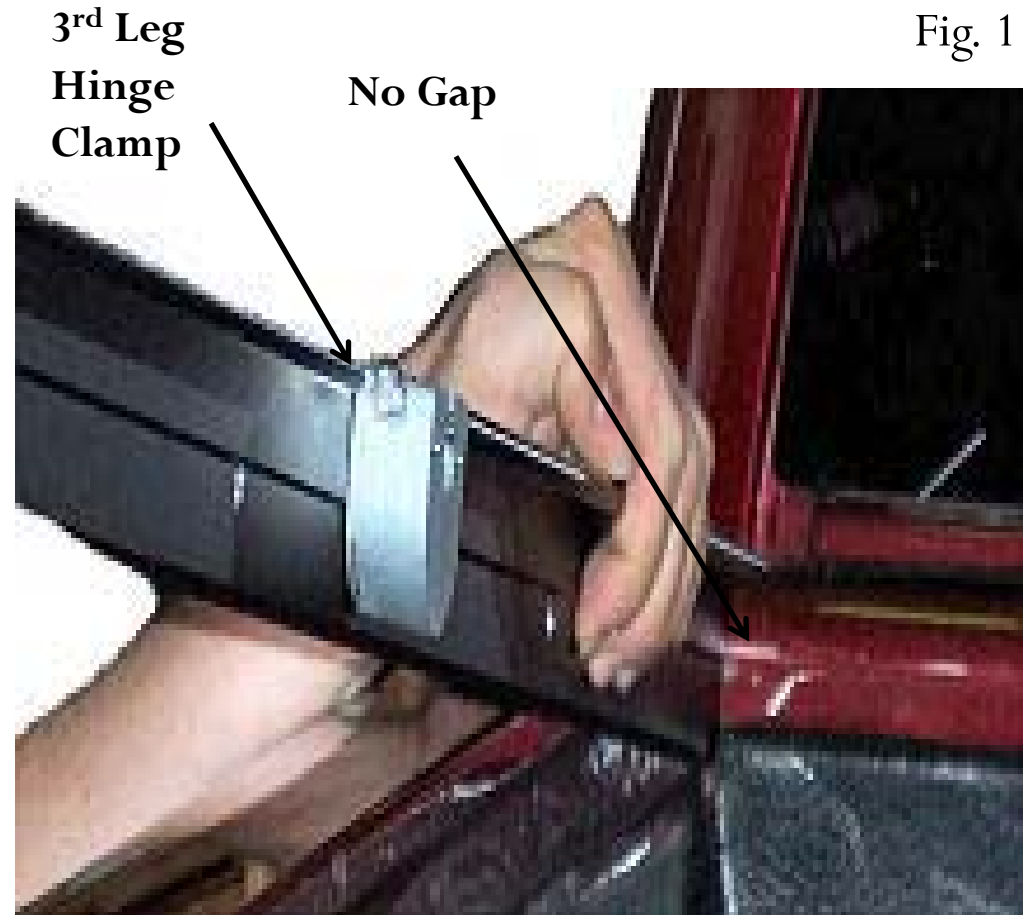


Fig. 1

Website: [www.Advancedfoldingcover.com](http://www.Advancedfoldingcover.com) E-Mail [Info@Advancedfoldingcover.com](mailto:Info@Advancedfoldingcover.com)

Phone Number 1-877-723-8262

# Step 1 cont.

## Install Rails And Seals

- Next, remove the 10 clamps from your installation kit. To clamp the rail on the truck bed use a 5/16" socket, wrench or drill then tighten the screws on clamps. **Be careful not to over tighten!** You must use the one preset spot on each rail (Fig.2). Then space out evenly.



Fig. 2

Preset spot



Website: [www.Advancedfoldingcover.com](http://www.Advancedfoldingcover.com) E-Mail [Info@Advancedfoldingcover.com](mailto:Info@Advancedfoldingcover.com)

Phone Number 1-877-723-8262

# Step 1 cont.

## Install Rails And Seals

Fig. 3

3. The first step in installing the Box Seal is to place the guide on the outside of the rail by the cab (Fig 3). Then, remove about 8 inches of the two-sided tape from the Box Seal. Place the Box Seal on the outside of the guide. Start from about an inch from the front and gradually pull the white paper back; push the Box Seal against the guide and rail all the way down the rail, which will give you a perfectly straight seal. Run the seal just past the stake pocket hole and stop, the remaining seal will be trimmed later. Do this on both sides. Finally, remove the white paper on the D-Seal and place it at the end of the rail by the Tailgate (Fig. 4).



Fig. 4



The rounded side of your box seal must run along the outside of truck

Website: [www.Advancedfoldingcover.com](http://www.Advancedfoldingcover.com) E-Mail [Info@Advancedfoldingcover.com](mailto:Info@Advancedfoldingcover.com)

Phone Number 1-877-723-8262

# Step 2

## Install Advanced X5 Supra Cover

1. Place the 3<sup>rd</sup> leg hinge on the cover, which drops in the key hole bracket (mounted on cover), into the 3<sup>rd</sup> leg hinge clamp on the rail. The yellow warning sticker on the cover will be facing up. (Fig.5)
2. Step back behind the tailgate and center the cover. Do not center cover to the Box Seal, center the cover to the Truck Bed.

Fig.5



Equal distance  
on each side



3<sup>rd</sup> leg hinge  
and clamp

# Step 2 cont.

## Install Advanced X5 Supra Cover

3. Tighten down the screws in both 3<sup>rd</sup> leg hinge clamps with a 5/16" socket , wrench or drill. (Fig.6)
4. Undo the four tie downs and unfold the cover over the truck bed. (Fig. 7) For detailed instructions see the yellow sticker under the cover.
5. Tighten the lock nuts on all clamps and both 3<sup>rd</sup> hinge leg clamps. Use a 3/8" wrench. (Fig.8)



Fig.6



Fig.8



Fig.7



Routinely check all clamps after installation.

# Step 2 cont.

## Install Advanced X5 Supra Cover

6. Trim the Box Seals and the D Seals with scissors.
  1. Line the rear trim pad up with the Box Seal (Fig 9).
  2. Score the Box Seal with a razor or scissors(Fig 10). Leave a 1/8" gape for water flow.
  3. Lift the cover up to check, then cut the Box Seal in front of the rear trim pad. Cut the D Seal in line with the Box Seal. Remove remaining tape and press seal down.

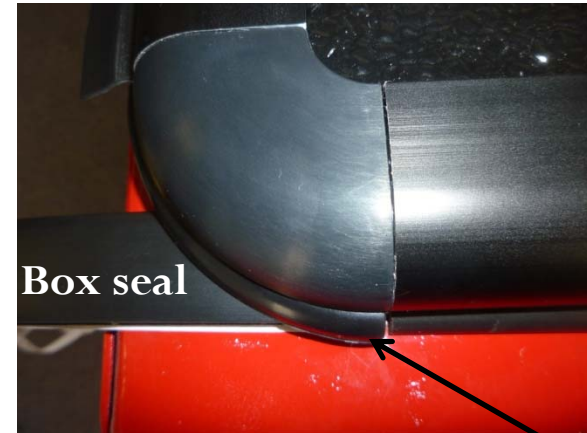
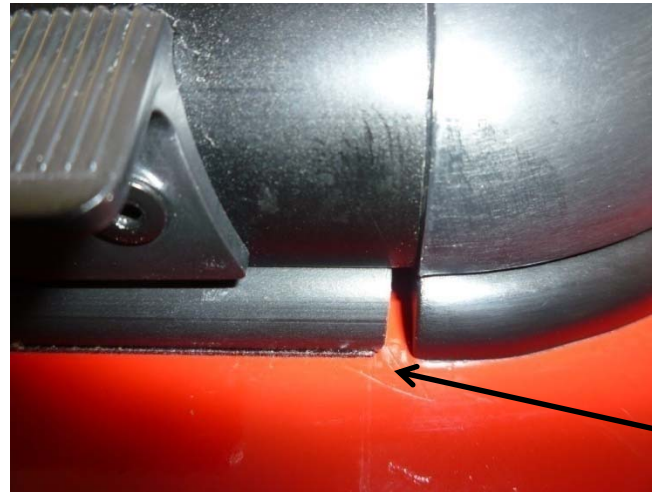


Fig.9

Box seal

Rear trim pad

Fig.10



Gap for  
water flow

[www.Advancedfoldingcover.com](http://www.Advancedfoldingcover.com) E-Mail [Info@Advancedfoldingcover.com](mailto:Info@Advancedfoldingcover.com)

Phone Number 1-877-723-8262

# Step 2 cont.

## Install Advanced X5 Supra Cover

7. Lift the front or rear panel up and look where the latch will rub against the rail. Place a piece of Mylar tape in that spot. This will reduce friction and ease the opening and closing of the cover. (Fig .11) Do the same for the other three latch points.



Refer to the Yellow warning sticker on your **New Advanced X5 Supra Cover** for: Instructions when the vehicle is in motion, Removal of the cover, Replacing the cover, and Opening and Closing the cover.

Mylar  
Tape

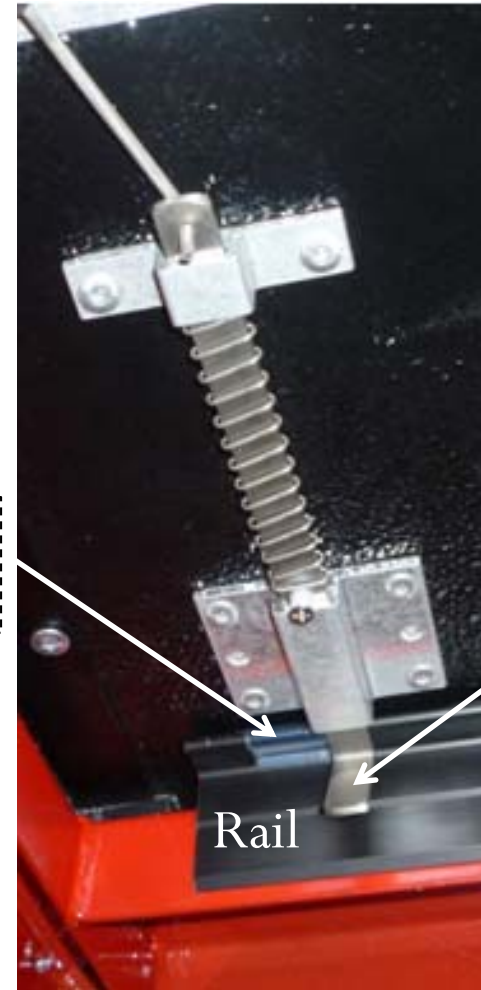


Fig.11

Latch

Rail

[www.Advancedfoldingcover.com](http://www.Advancedfoldingcover.com) E-Mail [Info@Advancedfoldingcover.com](mailto:Info@Advancedfoldingcover.com)

Phone Number 1-877-723-8262

# Step 3

## Adjust Center Latch Catch

1. The two center latch catches are mounted on the rail. You will have to get into the truck bed and lay under the cover to correctly adjust the center latch. Adjust your length from front to rear first, then your height up and down.
2. Loosen the three nuts with a 3/8 inch wrench.(Fig. 12)

Length  
Adjustment

Height  
Adjustment

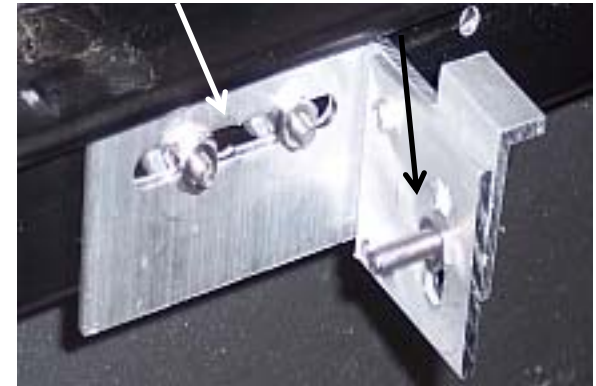
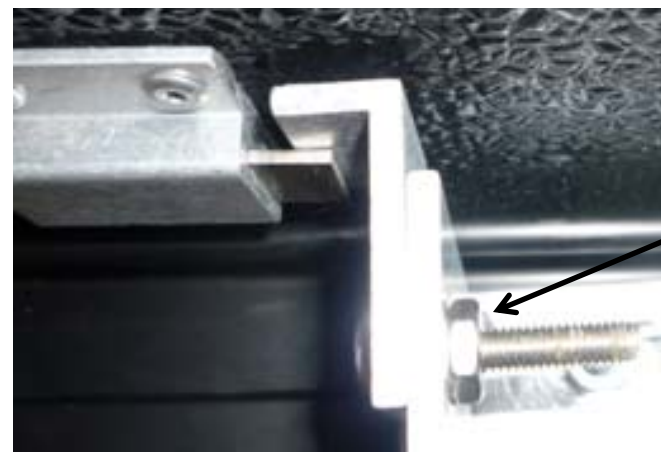


Fig. 12



Length  
Adjustment



Height  
Adjustment

# Step 3

## Adjust Center Latch Catch

3. Fold the cover completely down and place the center latch catch on top of the center latch (which is on the third panel). Pull down and push the catch forward until it rests on top of the latch, then tighten the three nuts. (Fig.13)



Fig. 13

4. Check the center latch catch by opening and closing the cover. Look to make sure the cover lays flat on the seal and the latch clears the catch when the rear panel is opened.