



ADVANCED FOLDING COVER INSTALLATION INSTRUCTIONS Advanced Folding X5 Supra Cover

2005-2010 Nissan Titan

(Part Number's 28840 & 28845)



For the video check out
[http://www.youtube.com/
watch?v=Hk5Q8hcaAN4](http://www.youtube.com/watch?v=Hk5Q8hcaAN4)

www.Advancedfoldingcover.com E-Mail Info@Advancedfoldingcover.com

Phone Number 1-877-723-8262

Prep Work And Check List



Clean the Surface of the Box sides on your truck with denatured alcohol or wax remover. It is IMPORTANT that the surface is clean so that our Box seal will adhere properly to the Truck box.

Suggested Tools

Scissors



5/16" Socket or Wrench



3/8" Wrench



Masking Tape



Installation Kit

2 L & R Keyhole Bracket
with Screw & Nut



2 Center Latch Catches (ST126), 2
Front Latch Catches (ST127), 2 Rear
Latch Catches (ST127-AR)



16 ST124



2 Box Seals



2 D-Seals



16 9714



16 Lock Washers & 16 Washers



4 Strips of Mylar Tape



Website: www.Advancedfoldingcover.com

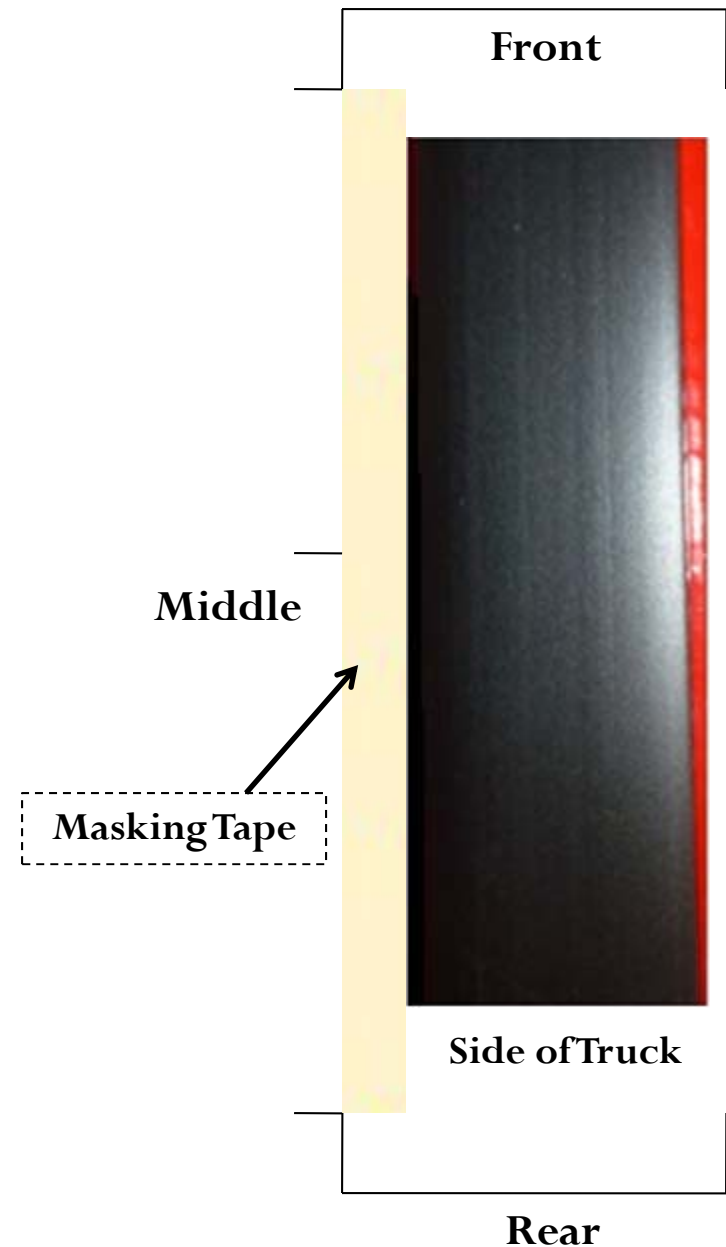
E-Mail: Info@Advancedfoldingcover.com

Phone Number 1-877-723-8262

Step 1

Install Box Seals

1. Clean the surface of the box side with denatures alcohol or wax remover before installing the seals. Measure 1/8th front, middle, and rear past the outermost ribs of truck box to the outside edge. Mark the dimensions with a small piece of masking tape. Then connect the pieces with a long piece of masking tape (stretch the tape tight so it remains straight). Connect the front to the middle, then the middle to rear. Press down both ends of the tape and lightly press down the tape in between. Cut off just enough one end of the Box Seal to square it up. The Box Seal will be installed along the inside edge of the masking tape with the rounded edge of the Box Seal outside. Remove approx 6" of backing and start the seal flush with the truck box and firmly press down. Continue removing approx. 12" of backing and applying the Box Seal to the truck. Stop and leave the backing on the seal about 12" from the rear. Install both sides.



Website: www.Advancedfoldingcover.com E-Mail Info@Advancedfoldingcover.com

Phone Number 1-877-723-8262

Step 2

Install D-Seal

2. Apply D-shaped seal. Remove 12" of backing. Start the seal flush with the front of the box. D-seal goes to the innermost flat surface of the Side Rail, basically just before it goes on the 45 degree angle down. Continue to remove backing and run seal along the inside edge of the truck box. Stop the seal about 12" short of the rear of the box leaving the backing on (DO NOT cut off the unused portion at this time).
3. Put pieces together



[Website:www.Advancedfoldingcover.com](http://www.Advancedfoldingcover.com) E-Mail Info@Advancedfoldingcover.com

Phone Number 1-877-723-8262

Step 3

Attach Pieces

Front

4.

**ST127-Front
Latch Catches**



**ST125 Keyhole Bracket
with Screw & Nut**



**ST126-Center
Latch Catches**



**ST127-AR
Rear Latch Catches**



[Website:www.Advancedfoldingcover.com](http://www.Advancedfoldingcover.com) E-Mail Info@Advancedfoldingcover.com

Phone Number 1-877-723-8262

Step 4

Install Advanced X5 Supra Cover

5. Set the cover on the truck box flush with front of box. After the front is set, center the cover from side to side maintaining the front setback distance. Fold the cover open so all 4 panels are stacked behind the cab while maintaining the front setback distance.
6. Position the Keyhole Bracket (part #ST125) so the 3rd Leg Hinge falls into the opening of the Keyhole Bracket. Tighten screw on keyhole bracket to 3rd leg hinge. Tighten lock nut. Now tighten the bracket to the box. Do other side.
7. Unfold cover to the closed position.



3rd leg hinge

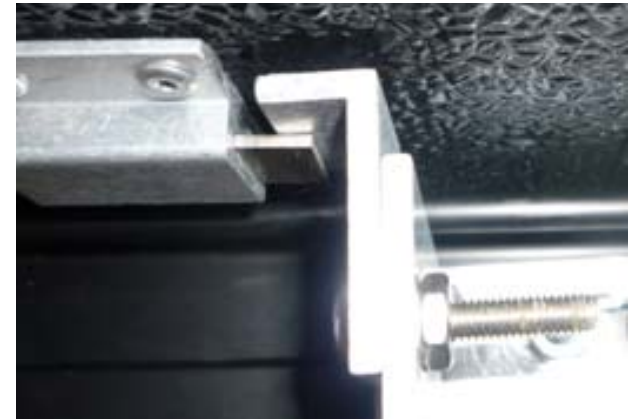
[Website:www.Advancedfoldingcover.com](http://www.Advancedfoldingcover.com) E-Mail Info@Advancedfoldingcover.com

Phone Number 1-877-723-8262

Step 4 cont.

Install Advanced X5 Supra Cover

8. Crawl into the truck box underneath the cover. With the cover closed and starting at the front, slide the Side Latch Catches underneath the Latch. You may need to loosen the bolts slightly to slide the bracket.
9. Adjust the catch up and down so it just sits on the latch. Make sure the cover is not resting on the top of the Catch. Then tighten the Latch Catch to the truck (part #ST127). Apply the Mylar Tape to the Catch where the Latch hits the Catch. Repeat steps to do other side.
10. To install Center Latch Catches (part #ST126) slide the Center Latch Catch towards the latch, making sure the Catch lies between the cover and the Latch. Stop the Center Latch Catch 1/16" short of the Latch mounting bracket. Tighten screws down. Repeat steps for other side.

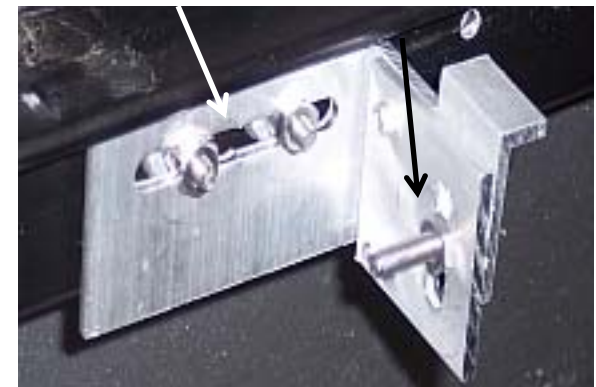


Length

Adjustment

Height

Adjustment



Make sure the Catch does not touch the panel trim.

Website: www.Advancedfoldingcover.com E-Mail Info@Advancedfoldingcover.com

Phone Number 1-877-723-8262

Step 4 cont.

Install Advanced X5 Supra Cover

11. Close the cover. Lift the rear panel enough to mark the Box Seal and the D-shaped seal even with the rear corner trim pad attached to rear corner of cover. Cut the D-seal off at the mark and stick to truck side. Do on both sides. Cut the Box seal ¼" from the mark toward the front of cover. Leave a ¼" gap for water to flow.
12. Repeat procedure in steps number 7 and 8 for the 2 Side Latch Catch at the rear of the truck box. Make sure the center latch is not resting on the Center Latch Catch when installing the rear Side Latch Catches.
13. Install front D-seal. Run D-seal along front edge of truck box. Make sure D-seal does not interfere with Latch release lever.

