

ADVANCED FOLDING COVER LLC

ADVANCED FOLDING COVER INSTALLATION INSTRUCTIONS Advanced Folding X5 Supra Cover

1997-2009 Ford

(Part Number's 28500, 28550, 28515, 28600, 28650 & 28675)



For the video check out
[http://www.youtube.com/
watch?v=Hk5Q8hcaAN4](http://www.youtube.com/watch?v=Hk5Q8hcaAN4)

www.Advancedfoldingcover.com E-Mail Info@Advancedfoldingcover.com
Phone Number 1-877-723-8262

Prep Work And Check List



Clean the Surface of the Box sides on your truck with denatured alcohol or wax remover. It is IMPORTANT that the surface is clean so that our Box seal will adhere properly to the Truck box.

Suggested Tools

Scissors



5/16" Socket or Wrench



3/8" Wrench



Drill



#1 Phillips Screwdriver



Installation Kit

2 Rails



10 Clamps



2 Box Seals

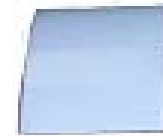


3 D-Seals



1 Long 2 Short
Part # 28675 2 Short

4 Strips of Mylar Tape



16 Screws  Only Part #'s 28600 & 28650

www.Advancedfoldingcover.com E-Mail Info@Advancedfoldingcover.com

Phone Number 1-877-723-8262

Step 1

Install Box Seal

Box Seal Setback Chart

| Part# | Front | Rear |
|-------|--------|--------|
| 28515 | 3 1/2" | 2 1/2" |
| 28500 | 3 1/2" | 2 1/2" |
| 28550 | 3 1/2" | 2 1/2" |
| 28600 | 2 3/4" | 2 3/4" |
| 28650 | 2 3/4" | 2 3/4" |
| 28675 | 2 1/4" | 2 1/4" |

28500 and 28550 the Box seal will start on the 4th rib out from the inside of the box and continue all the way to the rear of the truck.

1. To install the Box Seal, check the Box Seal Setback Chart for the distance according to your part number. Mark the dimensions with a small piece of masking tape(Fig. 1) Then, connect the pieces with a long piece of tape(stretch the tape so it remains straight)(Fig. 2). Press down the tape. Place the box seal (rounded edge on the outside)on the **inside** edge of the tape. Remove about 8 inches of the white paper from the Box Seal. Gradually, pull the white paper back and push the Box Seal against the inside edge of the tape. Leave the white paper on the box seal 12 inches from the rear. Do this on both sides. (Fig. 3)(For 28600 & 28650 fasten the screws evenly to the box seal.)

Fig.1



Front

Fig. 2



Fig. 3



Rear

www.Advancedfoldingcover.com E-Mail Info@Advancedfoldingcover.com

Phone Number 1-877-723-8262

Step 2

Install Rail and D-Seals

It is very important, to have the rail touching the front of the truck box, so the cover can line up correctly. Check this first, if the cover does not line up correctly.

1. There are two rails. Put the rail with the 3rd leg hinge clamp (Fig.4) closest to the cab on the bed rail. **Make sure the rail is as close as possible to the cab.** Remove the blue paper. Push the rail down, then do the same for the other side.
2. To clamp the rail on the truck bed use a 5/16" socket, wrench or drill then tighten the screws on clamps. **Be careful not to over tighten!** (Fig 5.) You may use the preset spots on each Preset spot rail.
3. Remove the white paper on the 2 Short D-Seals and place them at the end of each rail by the Tailgate. (Fig. 6)
4. Place the Long D-Seal flush and all the way across the front inside edge of the truck box.

3rd Leg Hinge Clamp

Fig. 4

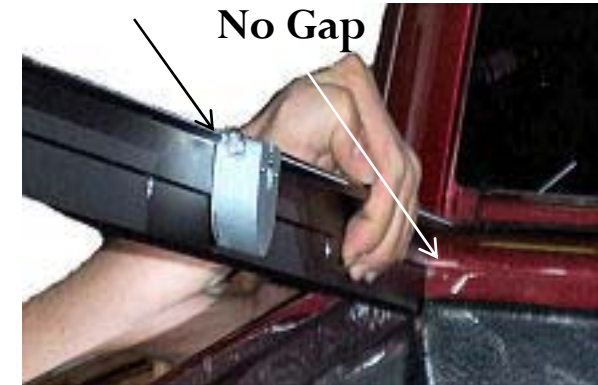
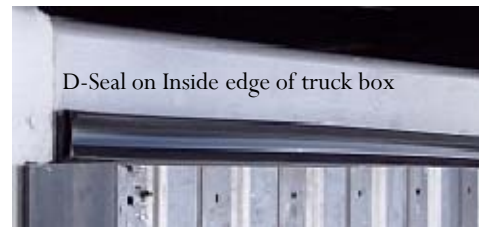


Fig. 5



Fig. 6



www.Advancedfoldingcover.com E-Mail Info@Advancedfoldingcover.com

Phone Number 1-877-723-8262

Step 3

Install Advanced X5 Supra Cover

3rd leg hinge
and clamp

1. Place the 3rd leg hinge on the cover, into the 3rd leg hinge clamp on the rail. The yellow warning sticker on the cover will be facing up. (Fig.7)
2. Step back behind the tailgate and center the cover. Do not center cover to the Box Seal, center the cover to the Truck Bed.
3. Tighten down the screw in the 3rd leg hinge clamp with a 5/16" socket , wrench or drill.
4. Fold the cover over the truck bed. (Fig. 8) For detailed instructions see the yellow sticker under the cover.
5. Tighten the lock nuts on all clamps and both 3rd hinge leg clamps. Use a 3/8" wrench. (Fig.9)

Fig.7

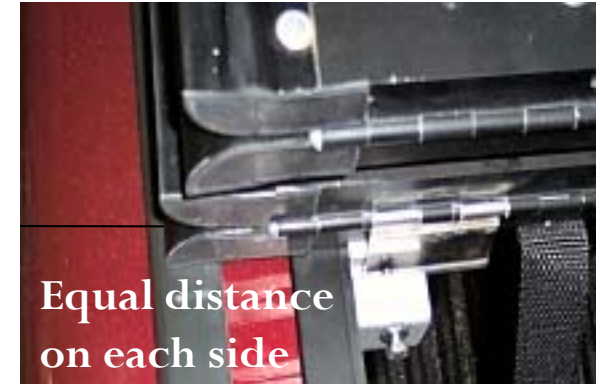


Fig. 8



Fig.9



Routinely check all clamps after installation.

www.Advancedfoldingcover.com E-Mail Info@Advancedfoldingcover.com

Phone Number 1-877-723-8262

Step 3 cont.

Install Advanced X5 Supra Cover

6. Trim the Box Seals and the D Seals with scissors.
 1. Line the rear trim pad up with the Box Seal.
 2. Score the Box Seal with a razor or scissors(Fig 10). Leave a 1/8" gape for water flow.
 3. Lift the cover up to check, then cut the Box Seal in front of the rear trim pad. Cut the D Seal in line with the Box Seal .
7. Lift the front or rear panel up and look where the latch will rub against the rail. Place a piece of Mylar tape in that spot. This will reduce friction and ease the opening and closing of the cover. (Fig .11) Do the same for the other three latch points.

Fig. 10

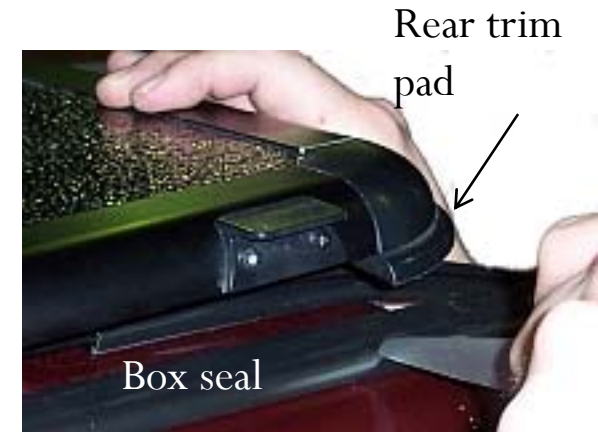
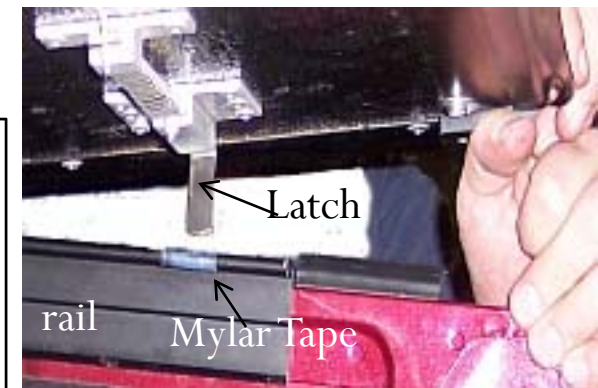


Fig. 11



Refer to the Yellow warning sticker on your **New Advanced X5 Supra Cover** for: Instructions when the vehicle is in motion, Removal of the cover, Replacing the cover, and Opening and Closing the cover.

www.Advancedfoldingcover.com E-Mail Info@Advancedfoldingcover.com

Phone Number 1-877-723-8262

Step 4

Adjust Center Latch Catch

1. The center latch catch is mounted on the rail. You will have to get into the truck bed and lay under the cover to correctly adjust the center latch.
2. Loosen the three nuts with a 3/8 inch wrench.(Fig. 12)
3. Fold the cover completely down and place the center latch catch on top of the center latch (which is on the third panel). Pull down and push the catch forward until it rests on top of the latch, then tighten the three nuts. (Fig.13)
4. Check the center latch catch by opening and closing the cover. Look to make sure the cover lays flat on the seal and the latch clears the catch when the rear panel is opened.

Fig. 12

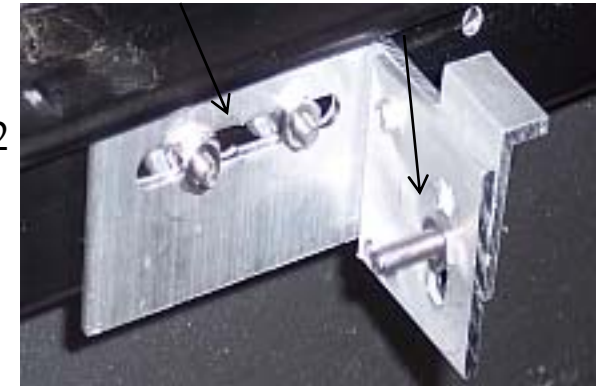


Fig. 13

