



# ADVANCED FOLDING COVER INSTALLATION INSTRUCTIONS Advanced Folding X5 Supra Cover

1994-2010 Dodge

(Part Number's 28400, 28420, 28450, 28425, 28475, 28480,  
28435, 28485)



For the video check out  
[http://www.youtube.com/  
watch?v=Hk5Q8hcaAN4](http://www.youtube.com/watch?v=Hk5Q8hcaAN4)

[www.Advancedfoldingcover.com](http://www.Advancedfoldingcover.com) E-Mail [Info@Advancedfoldingcover.com](mailto:Info@Advancedfoldingcover.com)  
Phone Number 1-877-723-8262

# Prep Work And Check List



Clean the Surface of the Box sides on your truck with denatured alcohol or wax remover. It is IMPORTANT that the surface is clean so that our Box seal will adhere properly to the Truck box.

## Suggested Tools

Scissors



5/16" Socket or Wrench



3/8" Wrench



Drill



## Installation Kit

2 Rails



10 Clamps



2 Box Seals



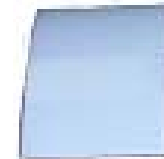
2 D-Seals



1 Guide



4 Strips of Mylar Tape



# Step 1

## Install Rails And Seals

It is very important, to have the rail touching the front of the truck box, so the cover can line up correctly. Check this first, if the cover does not line up correctly.



Fig. 4

1. There are two rails. Put the rail with the 3<sup>rd</sup> leg hinge clamp (Fig.1) closest to the cab on the bed rail. **Make sure the rail is as close as possible to the cab.** Remove the blue paper. Push the rail down, then do the same for the other side.
2. To clamp the rail on the truck bed use a 5/16" socket, wrench or drill then tighten the screws on clamps. **Be careful not to over tighten!** (Fig 2.) You may use the preset spots on each rail.
3. The first step in installing the Box Seal is to place the guide on the outside of the rail by the cab. (Fig 3) Then, remove about 8 inches of the white paper from the Box Seal. Place the Box Seal on the outside of the guide. Gradually, pull the white paper back and push the Box Seal against the guide and rail. Do this on both sides. Finally, remove the white paper on the D-Seal and place it at the end of the rail by the Tailgate. (Fig. 4)

Fig. 1

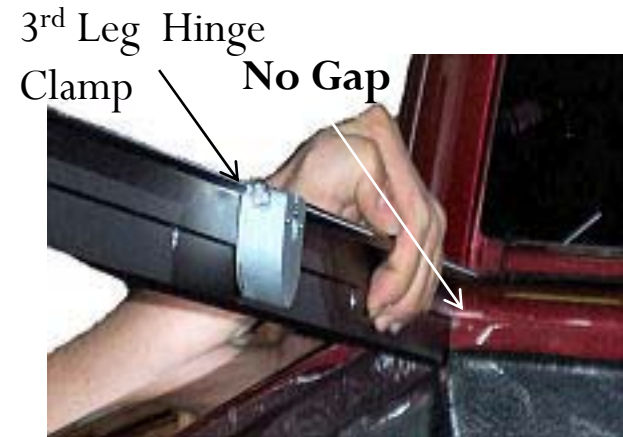


Fig. 2

Preset spot



Fig. 3



[www.Advancedfoldingcover.com](http://www.Advancedfoldingcover.com) E-Mail [Info@Advancedfoldingcover.com](mailto:Info@Advancedfoldingcover.com)

Phone Number 1-877-723-8262

# Step 2

## Install Advanced X5 Supra Cover

3<sup>rd</sup> leg hinge  
and clamp

1. Place the 3<sup>rd</sup> leg hinge, which is on the cover, into the 3<sup>rd</sup> leg hinge clamp on the rail. The yellow warning sticker on the cover will be facing up. (Fig.5)
2. Step back behind the tailgate and center the cover. Do not center cover to the Box Seal, center the cover to the Truck Bed.
3. Tighten down the screw in the 3<sup>rd</sup> leg hinge clamp with a 5/16" socket , wrench or drill.
4. Fold the cover over the truck bed. (Fig. 5) For detailed instructions see the yellow sticker under the cover.
5. Tighten the lock nuts on all clamps and both 3<sup>rd</sup> hinge leg clamps. Use a 3/8" wrench. (Fig.6)

Fig.5

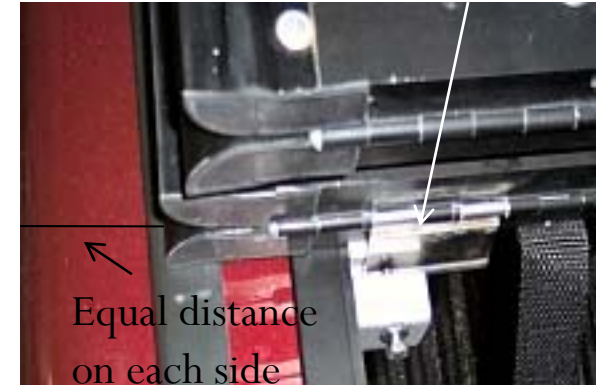


Fig. 5



Fig.6



Routinely check all clamps after installation.

[www.Advancedfoldingcover.com](http://www.Advancedfoldingcover.com) E-Mail [Info@Advancedfoldingcover.com](mailto:Info@Advancedfoldingcover.com)

Phone Number 1-877-723-8262

# Step 2 cont.

## Install Advanced X5 Supra Cover

6. Trim the Box Seal and the D Seal with a scissors.
  1. Line the rear trim pad up with the Box Seal.
  2. Score the Box Seal with a razor or scissors(Fig 7). Leave a 1/8" gape for water flow.
  3. Lift the cover up to check, then cut the Box Seal in front of the rear trim pad. Cut the D Seal in line with the Box Seal .
7. Lift the front or rear panel up and look where the latch will rub against the rail. Place a piece of Mylar tape in that spot. This will reduce friction and ease the opening and closing of the cover. (Fig .8) Do the same for the other three latch points.

Fig. 7

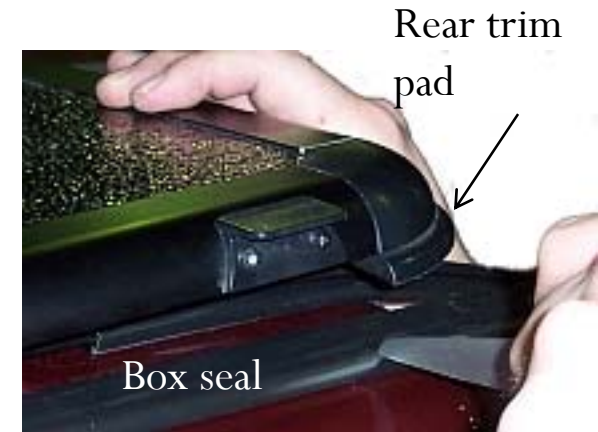
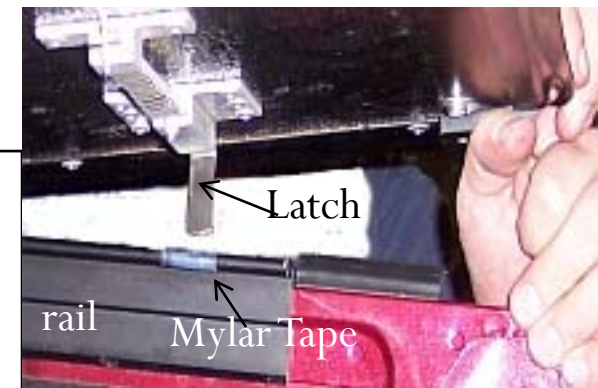


Fig.8



Refer to the Yellow warning sticker on your **New Advance d X5 Supra Cover** for: Instructions when the vehicle is in motion, Removal of the cover, Replacing the cover, and Opening and Closing the cover.

[www.Advancedfoldingcover.com](http://www.Advancedfoldingcover.com) E-Mail [Info@Advancedfoldingcover.com](mailto:Info@Advancedfoldingcover.com)

Phone Number 1-877-723-8262

# Step 3



Step 3 Not Needed On Part Numbers 28435 and 28485

## Adjust Center Latch Catch

Length Adjustment      Height Adjustment

1. The center latch catch is mounted on the rail. You will have to get into the truck bed and lay under the cover to correctly adjust the center latch.
2. Loosen the three nuts with a 3/8 inch wrench.(Fig. 9)
3. Fold the cover completely down and place the center latch catch on top of the center latch (which is on the third panel). Pull down and push the catch forward until it rests on top of the latch, then tighten the three nuts. (Fig.10)
4. Check the center latch catch by opening and closing the cover. Look to make sure the cover lays flat on the seal and the latch clears the catch when the rear panel is opened.

Fig. 9

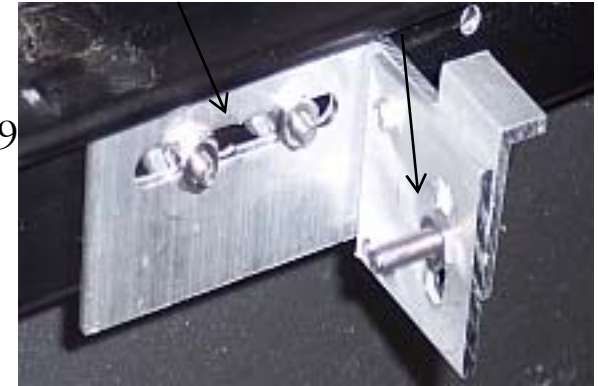


Fig. 10



Rear Panel Closed

[www.Advancedfoldingcover.com](http://www.Advancedfoldingcover.com) E-Mail [Info@Advancedfoldingcover.com](mailto:Info@Advancedfoldingcover.com)

Phone Number 1-877-723-8262